

YSCN VH -

DD / MM / YY HH:MM

ELEV 230' ATIS 125.10 GND 121.90 TWR 120.10

WEATHER

\_\_\_\_\_ hPA \_\_\_\_\_ kt \_\_\_\_\_ ° \_\_\_\_\_ Km

ATIS

IAS & RPPs

CTR ALT 1300'  
 CTR ENTRY 1800'  
 Rotate 65 kt  
 Base 75 kt  
 Final 70 kt  
 Threshold 65 kt  
**Glide 68 kt**  
 BstRt Vy 74 kt  
 BstAn Vx 62 kt  
 Cruise 2.3 RPM  
 Dsc 1.5-1.8k RPM

RADIO CALLS

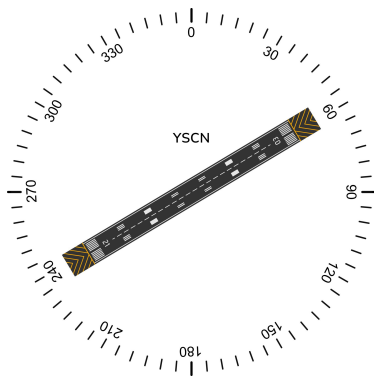
Taxi: Camden Ground, [call sign], Dual, at Scout hangar, Request taxi for crosswind departure, Received [ATIS].  
 Departure: Camden Tower, [call sign], Dual, at holding point [X], Ready via crosswind.  
 Circuits: Camden Ground, [call sign], Dual, at the Scouts Hangar, Request start and taxi for circuits. Received [ATIS].  
 Arrival: Camden Tower, [call sign], [Location], 1800, Received [ATIS], inbound.

ATC RESPONSE

HP  A/E  RW  06/24

Attitude Speed Power Trim

NOTES



PRE-LAND

- Brake disengaged
- Undercarriage
- Mix rich
- Fuel sufficient
- Instruments OK
- Switches
- Hatches & straps

300' CHECKS

- Temperatures
- Pressures

START DOWNWIND

- Heading
- Height 1,000 AGL
- Spacing
- Speed 110 kt

DD / MM / YY HH:MM

VH -

YSCN

ELEV 230' ATIS 125.10 GND 121.90 TWR 120.10

WEATHER

\_\_\_\_\_ hPA \_\_\_\_\_ kt \_\_\_\_\_ ° \_\_\_\_\_ Km

ATIS

IAS & RPMs

CTR ALT 1300'  
 CTR ENTRY 1800'  
 Rotate 65 kt  
 Base 75 kt  
 Final 70 kt  
 Threshold 65 kt  
**Glide 68 kt**  
 BstRt Vy 74 kt  
 BstAn Vx 62 kt  
 Cruise 2.3 RPM  
 Dsc 1.5-1.8k RPM

RADIO CALLS

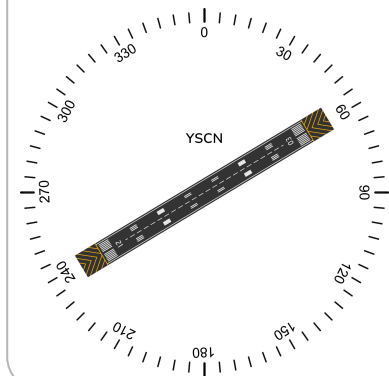
Taxi: Camden Ground, [call sign], Dual, at Scout hangar, Request taxi for crosswind departure, Received [ATIS].  
 Departure: Camden Tower, [call sign], Dual, at holding point [X], Ready via crosswind.  
 Circuits: Camden Ground, [call sign], Dual, at the Scouts Hangar, Request start and taxi for circuits. Received [ATIS].  
 Arrival: Camden Tower, [call sign], [Location], 1800, Received [ATIS], inbound.

ATC RESPONSE

HP  A/E  RW  06/24

Attitude Speed Power Trim

NOTES



PRE-LAND

- Brake disengaged
- Undercarriage
- Mix rich
- Fuel sufficient
- Instruments OK
- Switches
- Hatches & straps

300' CHECKS

- Temperatures
- Pressures

START DOWNWIND

- Heading
- Height 1,000 AGL
- Spacing
- Speed 110 kt

YSCN VH -

DD / MM / YY HH:MM

ELEV 230' ATIS 125.10 GND 121.90 TWR 120.10

WEATHER

\_\_\_\_ hPA \_\_\_\_ kt \_\_\_\_ ° \_\_\_\_ Km

ATIS

IAS & RPPs

CTR ALT 1300'  
 CTR ENTRY 1800'  
 Rotate 65 kt  
 Base 75 kt  
 Final 70 kt  
 Threshold 65 kt  
**Glide 68 kt**  
 BstRt Vy 74 kt  
 BstAn Vx 62 kt  
 Cruise 2.3 RPM  
 Dsc 1.5-1.8k RPM

RADIO CALLS

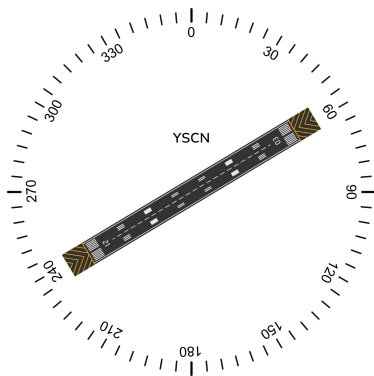
Taxi: Camden Ground, [call sign], Dual, at Scout hangar, Request taxi for crosswind departure, Received [ATIS].  
 Departure: Camden Tower, [call sign], Dual, at holding point [X], Ready via crosswind.  
 Circuits: Camden Ground, [call sign], Dual, at the Scouts Hangar, Request start and taxi for circuits. Received [ATIS].  
 Arrival: Camden Tower, [call sign], [Location], 1800, Received [ATIS], inbound.

ATC RESPONSE

HP  A/E  RW  06/24

Attitude Speed Power Trim

NOTES



PRE-LAND

- Brake disengaged
- Undercarriage
- Mix rich
- Fuel sufficient
- Instruments OK
- Switches
- Hatches & straps

300' CHECKS

- Temperatures
- Pressures

START DOWNWIND

- Heading
- Height 1,000 AGL
- Spacing
- Speed 110 kt

DD / MM / YY HH:MM

VH -

YSCN

ELEV 230' ATIS 125.10 GND 121.90 TWR 120.10

WEATHER

\_\_\_\_ hPA \_\_\_\_ kt \_\_\_\_ ° \_\_\_\_ Km

ATIS

IAS & RPMs

CTR ALT 1300'  
 CTR ENTRY 1800'  
 Rotate 65 kt  
 Base 75 kt  
 Final 70 kt  
 Threshold 65 kt  
**Glide 68 kt**  
 BstRt Vy 74 kt  
 BstAn Vx 62 kt  
 Cruise 2.3 RPM  
 Dsc 1.5-1.8k RPM

RADIO CALLS

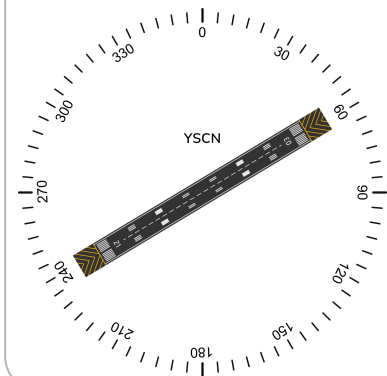
Taxi: Camden Ground, [call sign], Dual, at Scout hangar, Request taxi for crosswind departure, Received [ATIS].  
 Departure: Camden Tower, [call sign], Dual, at holding point [X], Ready via crosswind.  
 Circuits: Camden Ground, [call sign], Dual, at the Scouts Hangar, Request start and taxi for circuits. Received [ATIS].  
 Arrival: Camden Tower, [call sign], [Location], 1800, Received [ATIS], inbound.

ATC RESPONSE

HP  A/E  RW  06/24

Attitude Speed Power Trim

NOTES



PRE-LAND

- Brake disengaged
- Undercarriage
- Mix rich
- Fuel sufficient
- Instruments OK
- Switches
- Hatches & straps

300' CHECKS

- Temperatures
- Pressures

START DOWNWIND

- Heading
- Height 1,000 AGL
- Spacing
- Speed 110 kt